

NM2-2SDC

2" M2 Square LED Recessed Downlight

Source: 8W or 10W LED
600lm or 850lm

Type	
Project	
Catalog No.	
Notes	

PRODUCT DESCRIPTION

M2 downlight series features quality and convenience with easy installation for insulated or non-insulated applications.

FEATURES

- No housing required - IC Air-Tight rated
- Easy installation for remodel or new construction applications
- Quick disconnect allows for extended lengths
- 600lm or 850lm LED packages
- 2700K or 3000K @ 90+ CRI
- Triac or ELV dimming
- 5-year limited warranty
- ENERGY STAR certified
- cETLus Listed for Wet Locations

SPECIFICATION

Construction: Die-cast aluminum trims available in matte black or matte powder white finish.

Air Flow Restriction: Luminaire has factory installed gasket to restrict airflow from room into ceiling plenum to <2CFM (cubic feet per minute) in accordance with ASTM-283 Air-Tight requirements.

Clearance: IC rated luminaires are rated for direct contact with insulation (not spray foam insulation), no minimum clearance is required.

Junction Box: Prewired junction box includes quick connect to LED fixtures for ease of installation. Junction box includes two (600lm) or four (850lm) 1/2" trade size knockouts and snap on cover with 7" quick connect wire. Luminaire includes 5" (600lm) or 4" (850lm) quick connect wire.

Maximum length between luminaire and driver is 40'. For longer remote driver remote run length, consult factory.

Mounting: No housing is required, two tensions steel spring clips secure luminaire to ceiling. Accommodates ceiling thickness up to 3/4". New construction frame-in kits are available, see accessories.

ELECTRICAL	60	85
Input Voltage	120V	
Input Power	8W	10W
Color Temperature	2700K or 3000K	
Color Rendering Index	90+ CRI	
Dimming	Triac / ELV	
Operating Temperature	0°C to 40°C	0°C to 25°C
Beam Spread	36° Flood	
Lifetime	60,000 hours @ L70	

OPTIONAL MOUNTING ACCESSORIES

[NF-R246](#): Universal New Construction Frame-In

[NFC-R275](#): New Construction Frame-In with Collar

[NM2-EW-4](#): 4' Quick Connect Linkable Extension Cable

[NM2-EW-10](#): 10' Quick Connect Linkable Extension Cable

LABELS AND LISTINGS

- cETLus Listed for Wet Locations
- ENERGY STAR certified
- [5-Year Limited Warranty](#)
- FCC compliant
- Certified to the high efficacy requirements of California Title 24 JA8-2022

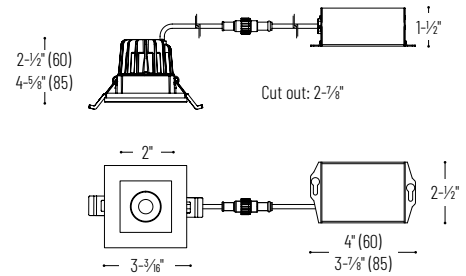


PRODUCT IMAGES AND DIMENSIONS



NM2-2SDC60XXMPW
600lm
Matte Powder White

NM2-2SDC85XXBB
850lm
Matte Black



2" M2 Square LED Recessed Downlight

Trim Type	Lumens / Wattage	Color Temperature	Finish
NM2-2SDC = 2" Square Downlight	60 = 600lm / 8W	27 = 2700K	BB = Matte Black
	85 = 850lm / 10W	30 = 3000K	MPW = Matte Powder White

Optional Mounting Accessories

Description
NF-R246 = Universal New Construction Frame-In
NFC-R275 = New Construction Frame-In with Collar
NM2-EW-4 = 4' Quick Connect Extension Cable
NM2-EW-10 = 10' Quick Connect Extension Cable

Example: **NM2-2SDC6030MPW** = 2" M2 Square LED Recessed Downlight, 600lm / 8W, 3000K, Matte Powder White

NM2-2SDC

2" M2 Square LED Recessed Downlight Accessories

Type _____

Project _____

Catalog No. _____

Notes _____



Universal New Construction Frame-In

NF-R246

Universal new construction frame-in can be used to assist installing can-less recessed downlighting.



New Construction Frame-In with Collar

NFC-R275

New construction frame-in can be used to assist installing can-less recessed downlighting.



Quick Connect Extension Linkable Cables

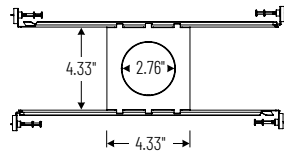
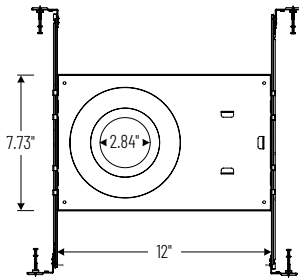
NM2-EW-4

4' Cable

NM2-EW-10

10' Cable

Use to extend the length between luminaire and driver enclosure. Can be connected together to create custom lengths. Maximum length between luminaire and driver is 40'. For longer remote driver remote run length, consult factory.



PHOTOMETRICS

2" M2 Square LED Recessed Downlight

Type

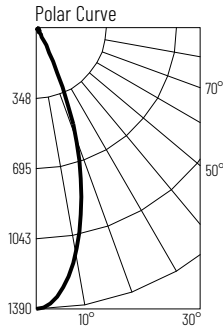
Project

Catalog No.

Notes

Test Information

Test Number: NTR1198
 Part Number: NM2-2SDC6027MPW
 Beam Spread: 36° Flood
 Lumens: 612lm
 Wattage: 8.26W
 Efficacy: 74lpw
 CCT / CRI: 2700K / 90 CRI
 Spacing Criteria (0°-180°): 0.6
 Spacing Criteria (90°-270°): 0.6



Illuminance at a Distance

Distance from Luminaire	FC at Nadir	Beam Diameter
2'	346fc	1'-4"
4'	86.4fc	2'-7"
6'	38.4fc	3'-11"
8'	21.6fc	5'-2"
10'	13.8fc	6'-7"

Zonal Lumen Summary

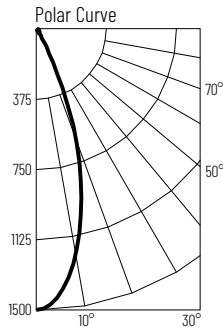
Zone	Lumens	% Luminaire
0-30	513	83.8
0-40	556	90.9
0-60	592	96.9
0-90	610	99.8
90-180	1	0.2
0-180	612	100

Candela Table

Vertical Angles	Candela
0	1383
5	1319
15	868
25	316
35	52
45	24

Test Information

Test Number: NTR1202
 Part Number: NM2-2SDC6030MPW
 Beam Spread: 36° Flood
 Lumens: 629lm
 Wattage: 8.08W
 Efficacy: 78lpw
 CCT / CRI: 3000K / 90 CRI
 Spacing Criteria (0°-180°): 0.6
 Spacing Criteria (90°-270°): 0.6



Illuminance at a Distance

Distance from Luminaire	FC at Nadir	Beam Diameter
2'	375fc	1'-4"
4'	93.7fc	2'-7"
6'	41.7fc	3'-11"
8'	23.4fc	5'-2"
10'	15fc	6'-6"

Zonal Lumen Summary

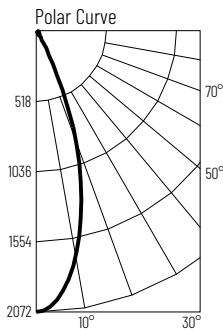
Zone	Lumens	% Luminaire
0-30	537	85.4
0-40	575	91.4
0-60	609	96.9
0-90	626	99.5
90-180	3	0.5
0-180	629	100

Candela Table

Vertical Angles	Candela
0	1500
5	1423
15	934
25	293
35	42
45	22

Test Information

Test Number: NTR1500
 Part Number: NM2-2SDC8530MPW
 Beam Spread: 36° Flood
 Lumens: 869lm
 Wattage: 10.18W
 Efficacy: 85lpw
 CCT / CRI: 3000K / 90 CRI
 Spacing Criteria (0°-180°): 0.6
 Spacing Criteria (90°-270°): 0.6



Illuminance at a Distance

Distance from Luminaire	FC at Nadir	Beam Diameter
2'	518fc	1'-4"
4'	130fc	2'-7"
6'	57.6fc	3'-11"
8'	32.4fc	5'-2"
10'	20.7fc	6'-6"

Zonal Lumen Summary

Zone	Lumens	% Luminaire
0-30	748	86.1
0-40	799	92
0-60	844	97.2
0-90	867	99.8
90-180	2	0.2
0-180	869	100

Candela Table

Vertical Angles	Candela
0	2072
5	1968
15	1286
25	429
35	56
45	29